

**LEGEND**

- STORMWATER MONITORING LOCATION
- +— RAILROAD
- ROAD
- ▭ HUC WATERSHED BOUNDARY
- ▭ YELLOWSTONE COUNTY MS4 BOUNDARY
- ▭ CITY OF BILLINGS BOUNDARY

**PRE-2019 INVESTIGATION: STORM WATER FACILITIES**

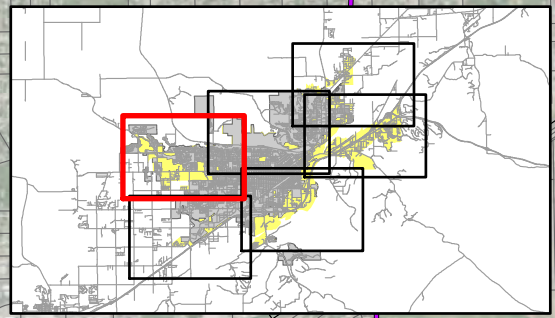
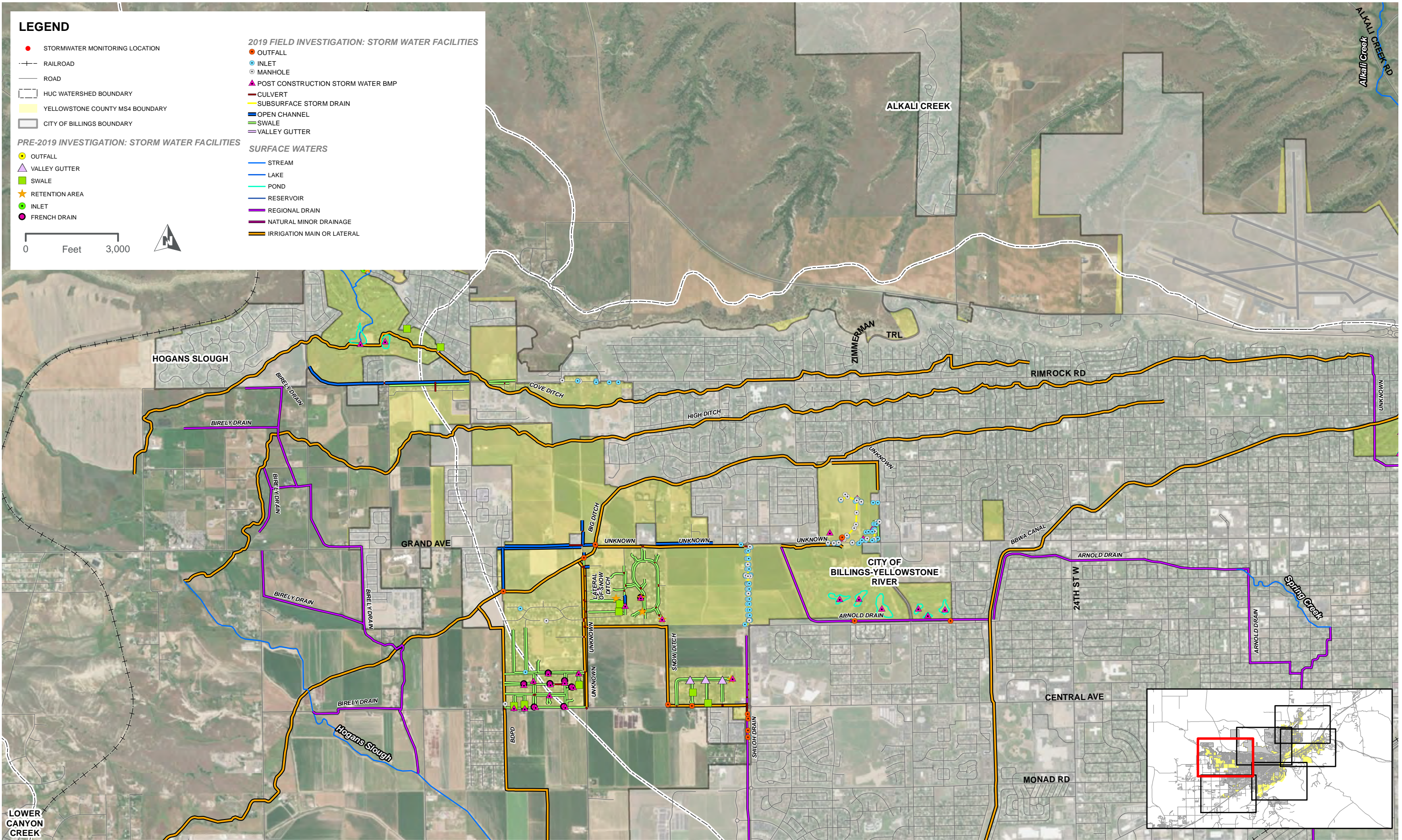
- OUTFALL
- ▲ VALLEY GUTTER
- SWALE
- ★ RETENTION AREA
- INLET
- FRENCH DRAIN

**2019 FIELD INVESTIGATION: STORM WATER FACILITIES**

- OUTFALL
- INLET
- MANHOLE
- ▲ POST CONSTRUCTION STORM WATER BMP
- CULVERT
- SUBSURFACE STORM DRAIN
- OPEN CHANNEL
- SWALE
- VALLEY GUTTER

**SURFACE WATERS**

- STREAM
- LAKE
- POND
- RESERVOIR
- REGIONAL DRAIN
- NATURAL MINOR DRAINAGE
- IRRIGATION MAIN OR LATERAL



NOTE: THIS IS A PROVISIONAL STORM WATER SYSTEM INVENTORY MAP. FACILITIES REPRESENTED ON THIS MAP WERE IDENTIFIED DURING A DESKTOP ANALYSIS AND FIELD INVESTIGATION CONDUCTED IN 2019. THE INVENTORY WILL BE UPDATED FOLLOWING AN OWNERSHIP AND DATA VALIDATION ANALYSIS IN 2020.



**LEGEND**

- STORMWATER MONITORING LOCATION
- RAILROAD
- ROAD
- ▭ HUC WATERSHED BOUNDARY
- ▭ YELLOWSTONE COUNTY MS4 BOUNDARY
- ▭ CITY OF BILLINGS BOUNDARY

**PRE-2019 INVESTIGATION: STORM WATER FACILITIES**

- OUTFALL
- ▭ VALLEY GUTTER
- ▭ SWALE
- ★ RETENTION AREA
- INLET
- FRENCH DRAIN

0 Feet 3,000

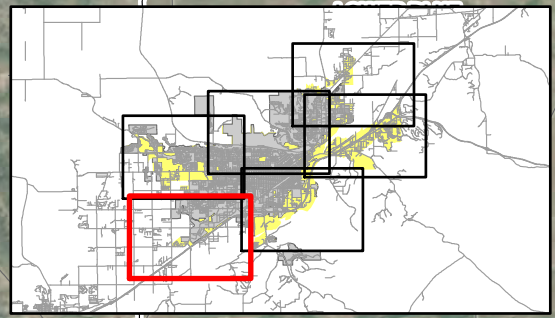
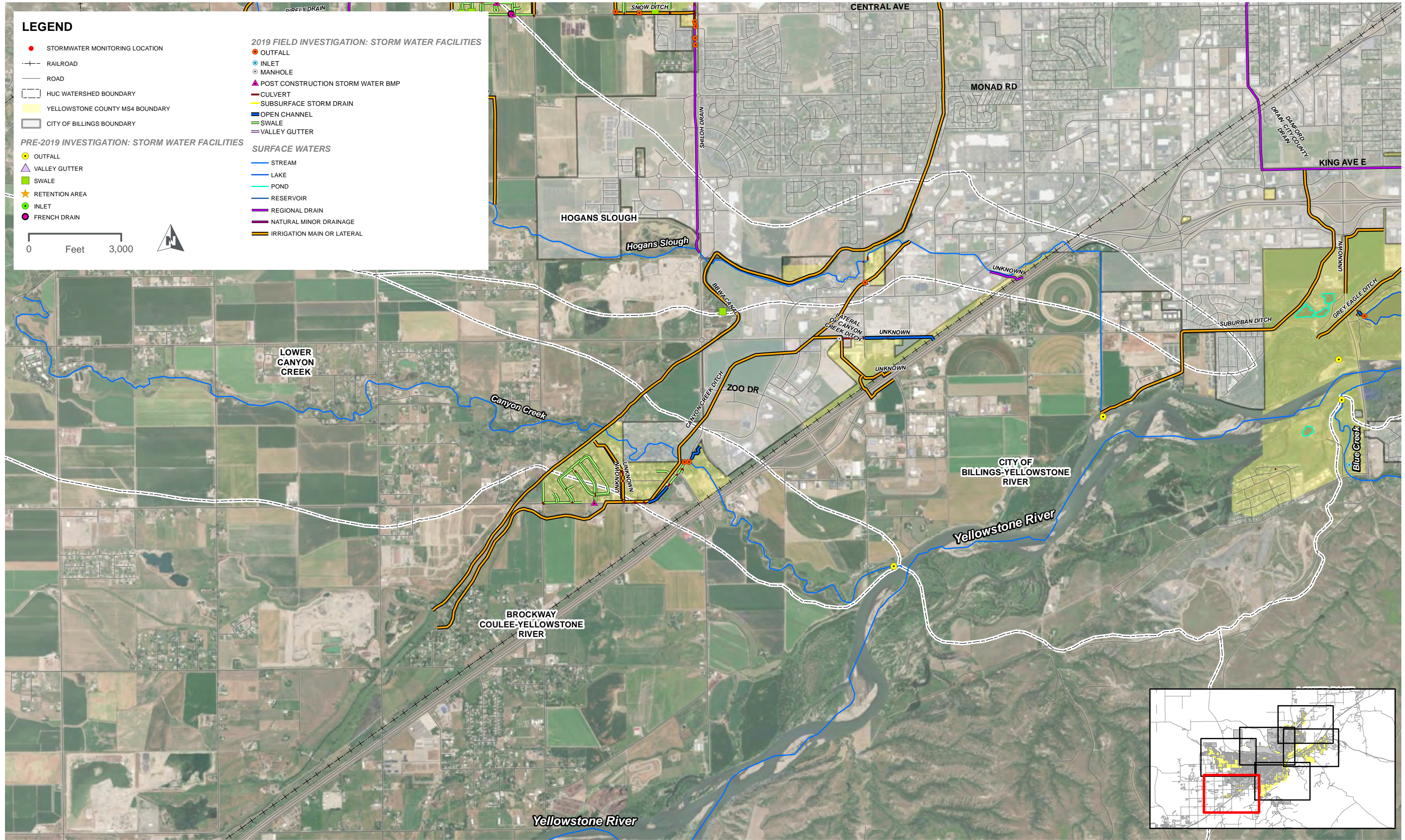


**2019 FIELD INVESTIGATION: STORM WATER FACILITIES**

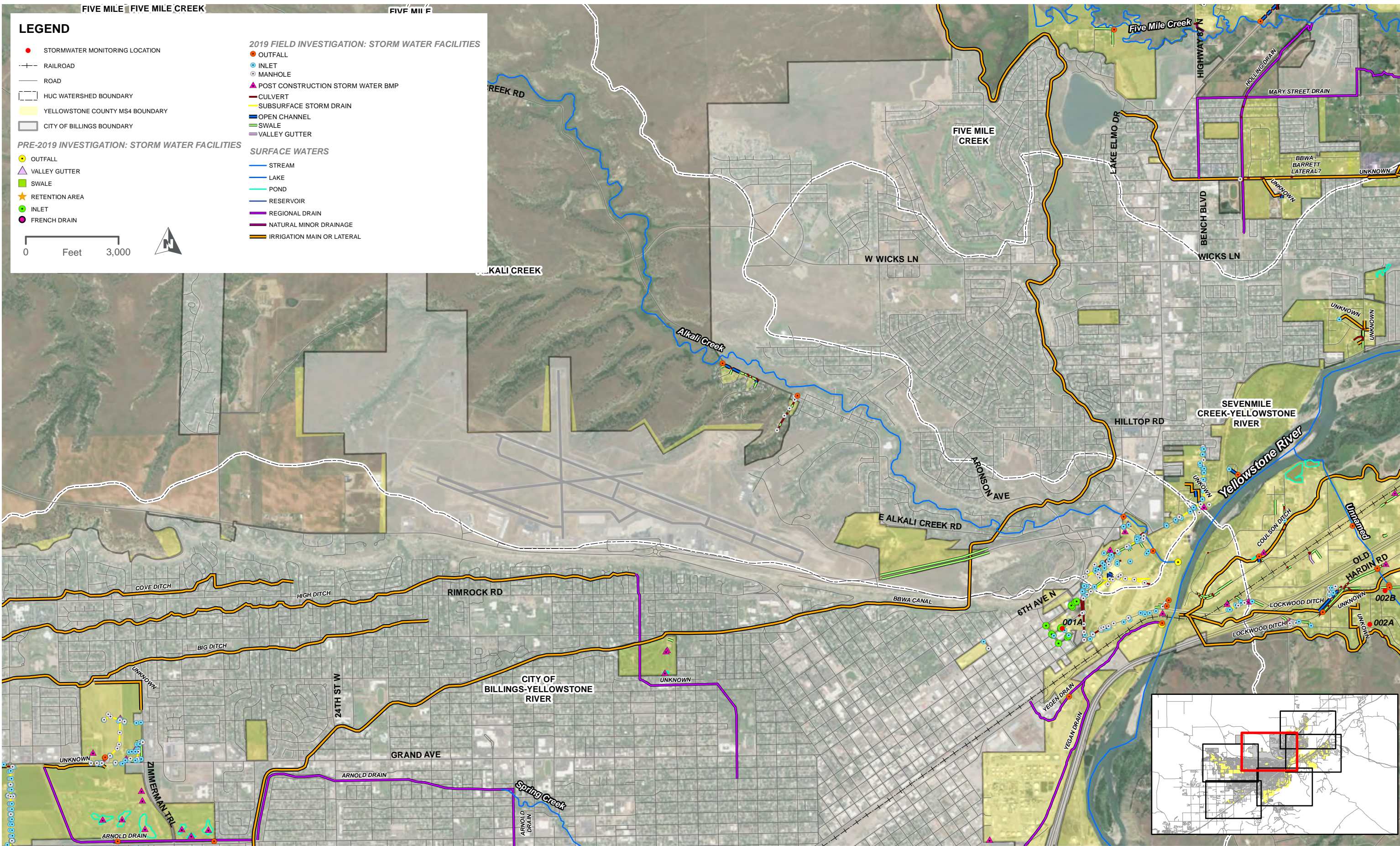
- OUTFALL
- INLET
- MANHOLE
- ▲ POST CONSTRUCTION STORM WATER BMP
- CULVERT
- SUBSURFACE STORM DRAIN
- OPEN CHANNEL
- SWALE
- VALLEY GUTTER

**SURFACE WATERS**

- STREAM
- LAKE
- POND
- RESERVOIR
- REGIONAL DRAIN
- NATURAL MINOR DRAINAGE
- IRRIGATION MAIN OR LATERAL



NOTE: THIS IS A PROVISIONAL STORM WATER SYSTEM INVENTORY MAP. FACILITIES REPRESENTED ON THIS MAP WERE IDENTIFIED DURING A DESKTOP ANALYSIS AND FIELD INVESTIGATION CONDUCTED IN 2019. THE INVENTORY WILL BE UPDATED FOLLOWING AN OWNERSHIP AND DATA VALIDATION ANALYSIS IN 2020.



**LEGEND**

- STORMWATER MONITORING LOCATION
- RAILROAD
- ROAD
- ▭ HUC WATERSHED BOUNDARY
- ▭ YELLOWSTONE COUNTY MS4 BOUNDARY
- ▭ CITY OF BILLINGS BOUNDARY

**PRE-2019 INVESTIGATION: STORM WATER FACILITIES**

- OUTFALL
- ▭ VALLEY GUTTER
- ▭ SWALE
- ★ RETENTION AREA
- INLET
- FRENCH DRAIN

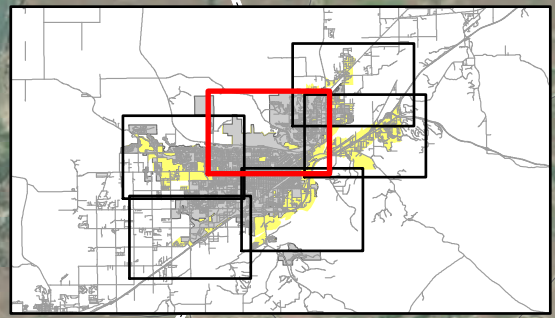
**2019 FIELD INVESTIGATION: STORM WATER FACILITIES**

- OUTFALL
- INLET
- MANHOLE
- ▲ POST CONSTRUCTION STORM WATER BMP
- CULVERT
- SUBSURFACE STORM DRAIN
- OPEN CHANNEL
- SWALE
- VALLEY GUTTER

**SURFACE WATERS**

- STREAM
- LAKE
- POND
- RESERVOIR
- REGIONAL DRAIN
- NATURAL MINOR DRAINAGE
- IRRIGATION MAIN OR LATERAL

0 Feet 3,000



NOTE: THIS IS A PROVISIONAL STORM WATER SYSTEM INVENTORY MAP. FACILITIES REPRESENTED ON THIS MAP WERE IDENTIFIED DURING A DESKTOP ANALYSIS AND FIELD INVESTIGATION CONDUCTED IN 2019. THE INVENTORY WILL BE UPDATED FOLLOWING AN OWNERSHIP AND DATA VALIDATION ANALYSIS IN 2020.

**YELLOWSTONE COUNTY**  
**PROVISIONAL STORM WATER SYSTEM INVENTORY DETAILED MAP**  
 FIGURE DM-1

**LEGEND**

- STORMWATER MONITORING LOCATION
- +— RAILROAD
- ROAD
- ▭ HUC WATERSHED BOUNDARY
- ▭ YELLOWSTONE COUNTY MS4 BOUNDARY
- ▭ CITY OF BILLINGS BOUNDARY

**PRE-2019 INVESTIGATION: STORM WATER FACILITIES**

- OUTFALL
- ▴ VALLEY GUTTER
- ▭ SWALE
- ★ RETENTION AREA
- INLET
- FRENCH DRAIN

0 Feet 3,000

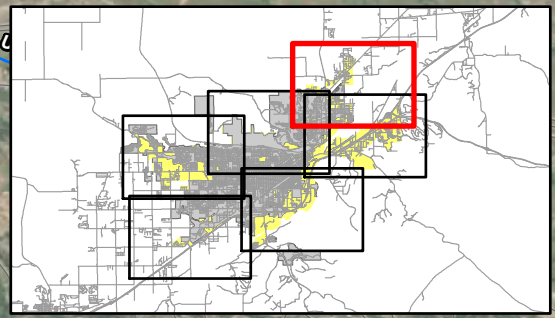
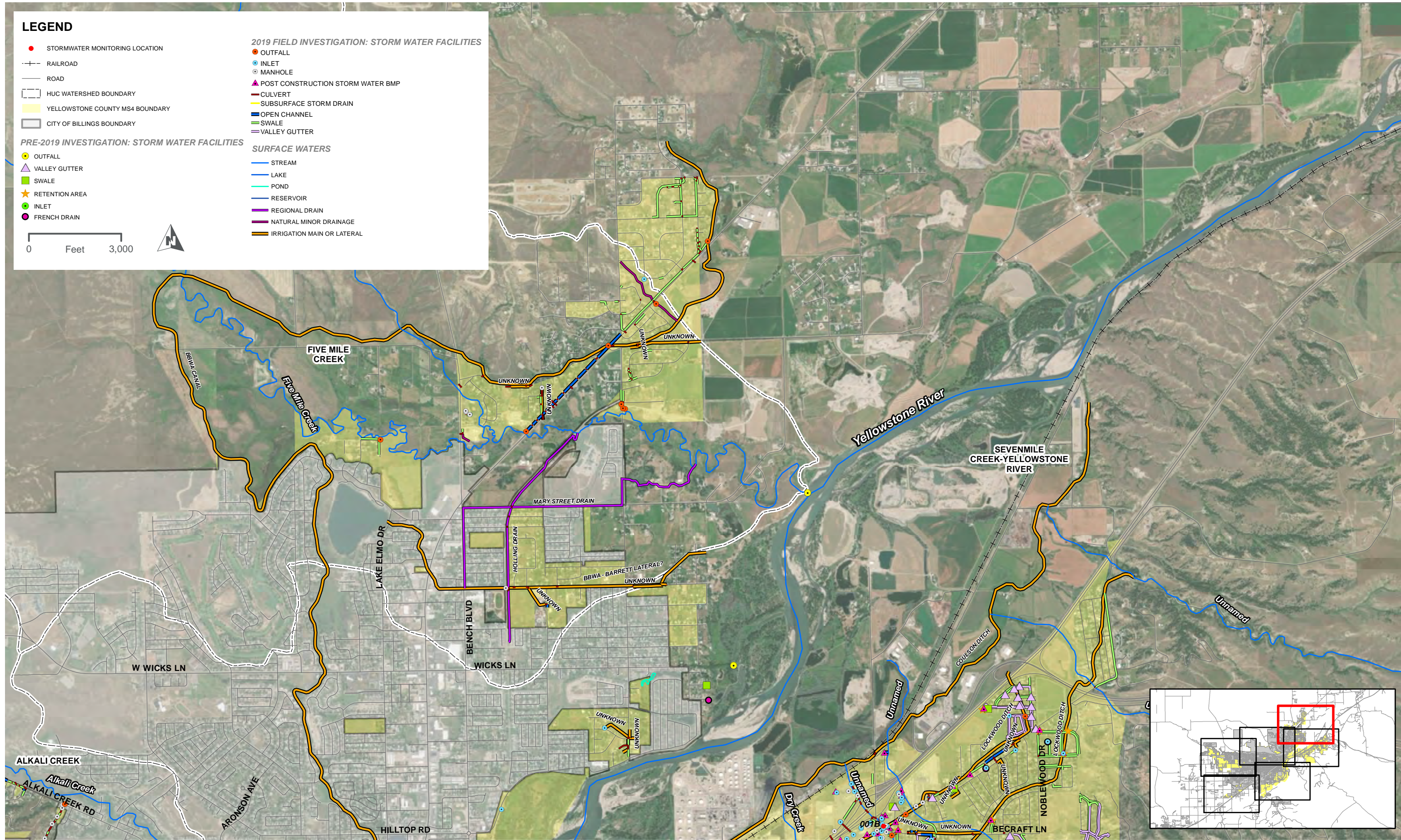


**2019 FIELD INVESTIGATION: STORM WATER FACILITIES**

- OUTFALL
- INLET
- MANHOLE
- ▲ POST CONSTRUCTION STORM WATER BMP
- CULVERT
- SUBSURFACE STORM DRAIN
- OPEN CHANNEL
- SWALE
- VALLEY GUTTER

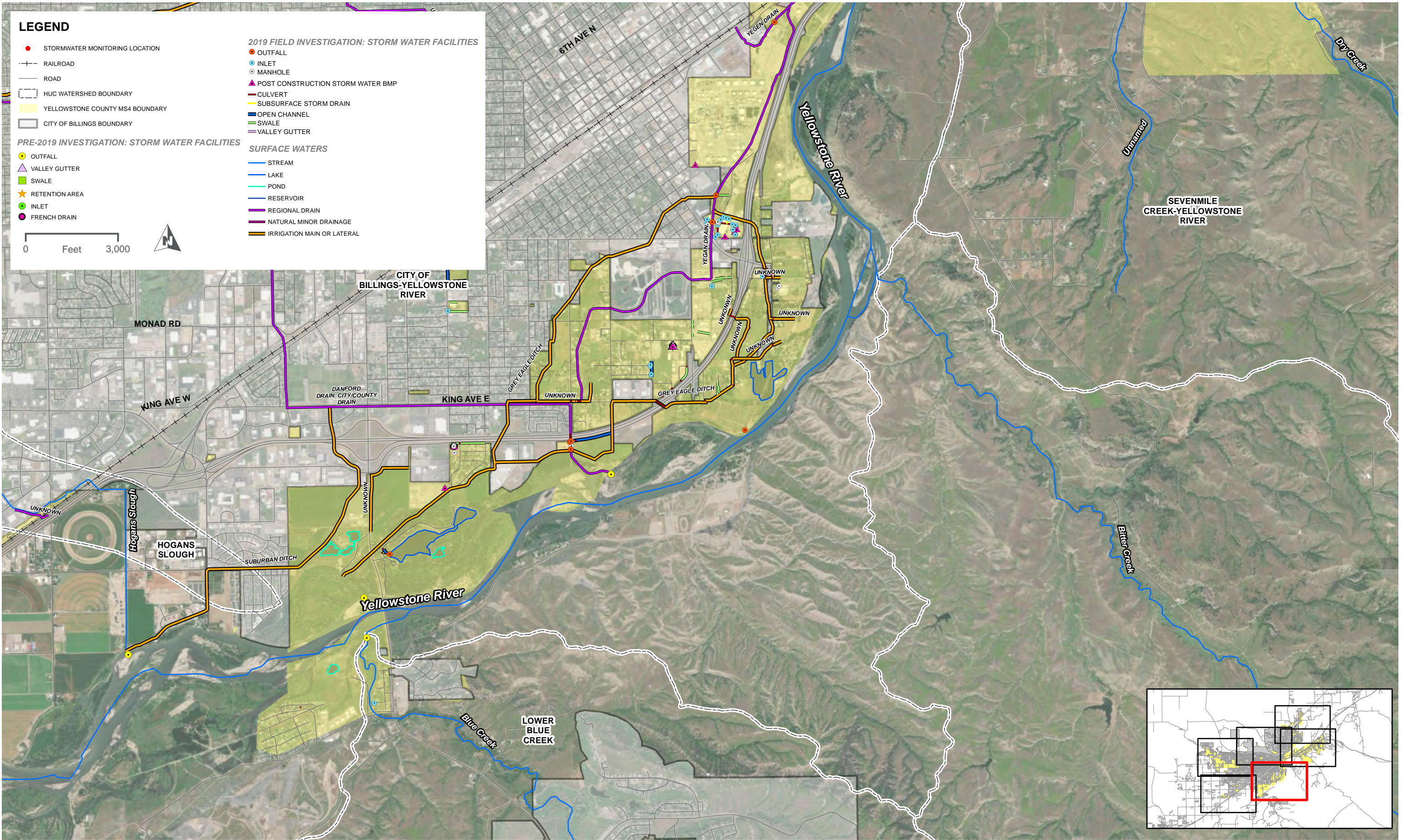
**SURFACE WATERS**

- STREAM
- LAKE
- POND
- RESERVOIR
- REGIONAL DRAIN
- NATURAL MINOR DRAINAGE
- IRRIGATION MAIN OR LATERAL



NOTE: THIS IS A PROVISIONAL STORM WATER SYSTEM INVENTORY MAP. FACILITIES REPRESENTED ON THIS MAP WERE IDENTIFIED DURING A DESKTOP ANALYSIS AND FIELD INVESTIGATION CONDUCTED IN 2019. THE INVENTORY WILL BE UPDATED FOLLOWING AN OWNERSHIP AND DATA VALIDATION ANALYSIS IN 2020.





**LEGEND**

- STORMWATER MONITORING LOCATION
- RAILROAD
- ROAD
- ▭ HUC WATERSHED BOUNDARY
- ▭ YELLOWSTONE COUNTY MS4 BOUNDARY
- ▭ CITY OF BILLINGS BOUNDARY

**PRE-2019 INVESTIGATION: STORM WATER FACILITIES**

- OUTFALL
- ▭ VALLEY GUTTER
- ▭ SWALE
- ★ RETENTION AREA
- INLET
- FRENCH DRAIN

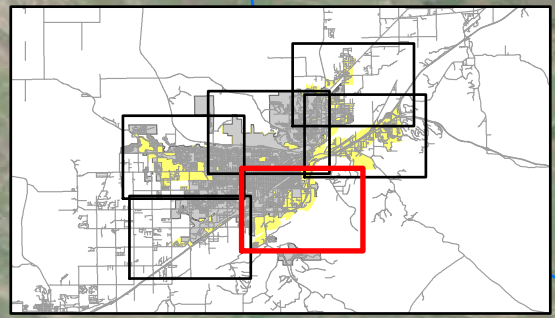
**2019 FIELD INVESTIGATION: STORM WATER FACILITIES**

- OUTFALL
- INLET
- MANHOLE
- ▲ POST CONSTRUCTION STORM WATER BMP
- CULVERT
- SUBSURFACE STORM DRAIN
- OPEN CHANNEL
- SWALE
- VALLEY GUTTER

**SURFACE WATERS**

- STREAM
- LAKE
- POND
- RESERVOIR
- REGIONAL DRAIN
- NATURAL MINOR DRAINAGE
- IRRIGATION MAIN OR LATERAL

0 Feet 3,000



NOTE: THIS IS A PROVISIONAL STORM WATER SYSTEM INVENTORY MAP. FACILITIES REPRESENTED ON THIS MAP WERE IDENTIFIED DURING A DESKTOP ANALYSIS AND FIELD INVESTIGATION CONDUCTED IN 2019. THE INVENTORY WILL BE UPDATED FOLLOWING AN OWNERSHIP AND DATA VALIDATION ANALYSIS IN 2020.

**LEGEND**

- STORMWATER MONITORING LOCATION
- +— RAILROAD
- ROAD
- ▭ HUC WATERSHED BOUNDARY
- ▭ YELLOWSTONE COUNTY MS4 BOUNDARY
- ▭ CITY OF BILLINGS BOUNDARY

**PRE-2019 INVESTIGATION: STORM WATER FACILITIES**

- OUTFALL
- ▲ VALLEY GUTTER
- SWALE
- ★ RETENTION AREA
- INLET
- FRENCH DRAIN

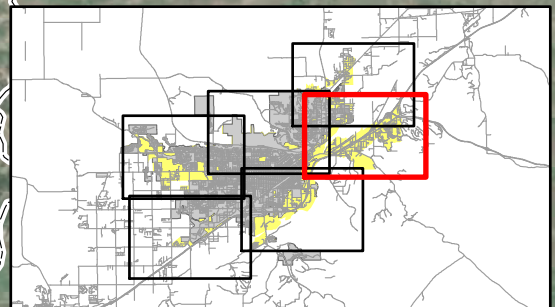
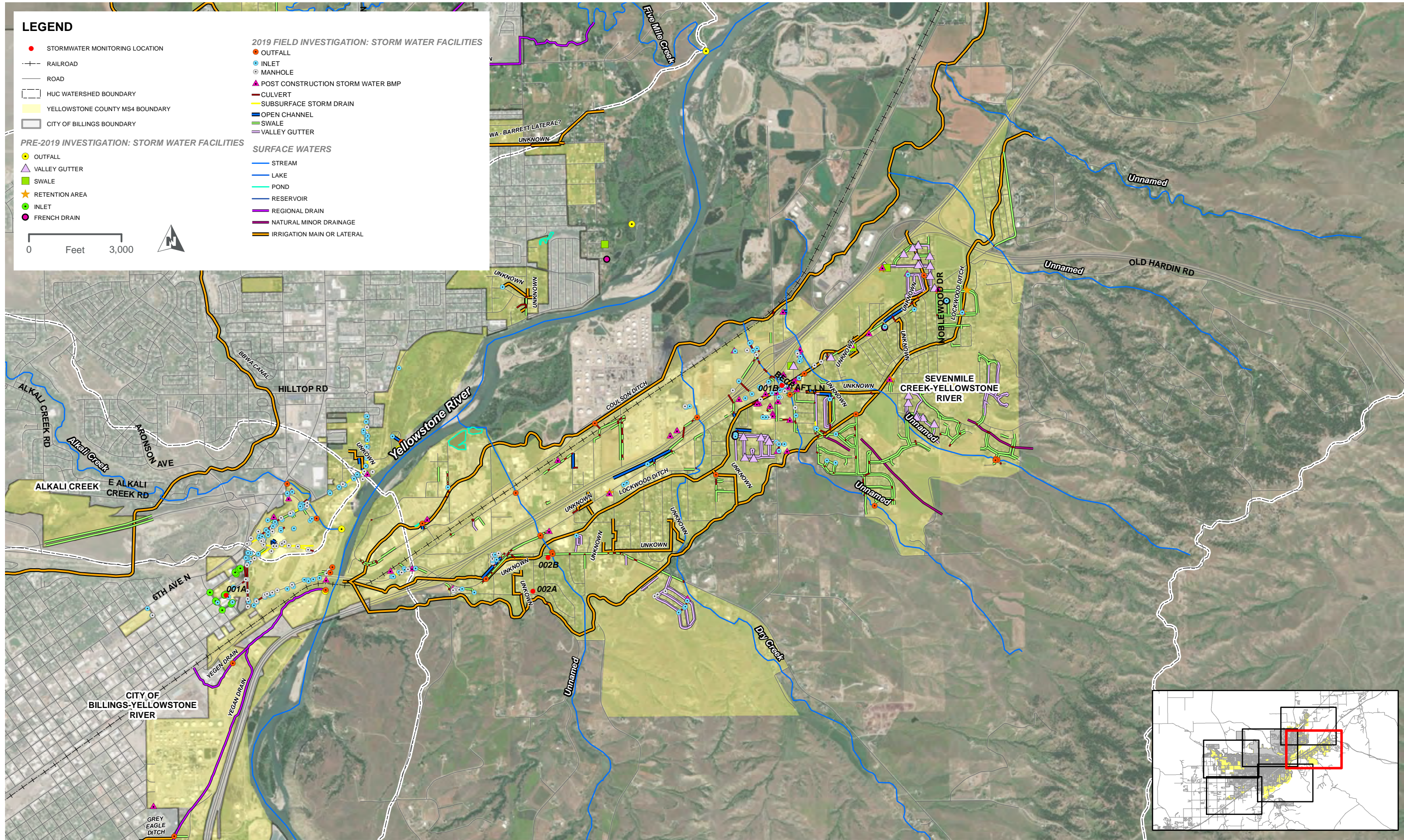
**2019 FIELD INVESTIGATION: STORM WATER FACILITIES**

- OUTFALL
- INLET
- MANHOLE
- ▲ POST CONSTRUCTION STORM WATER BMP
- CULVERT
- SUBSURFACE STORM DRAIN
- OPEN CHANNEL
- SWALE
- VALLEY GUTTER

**SURFACE WATERS**

- STREAM
- LAKE
- POND
- RESERVOIR
- REGIONAL DRAIN
- NATURAL MINOR DRAINAGE
- IRRIGATION MAIN OR LATERAL

0 Feet 3,000



NOTE: THIS IS A PROVISIONAL STORM WATER SYSTEM INVENTORY MAP. FACILITIES REPRESENTED ON THIS MAP WERE IDENTIFIED DURING A DESKTOP ANALYSIS AND FIELD INVESTIGATION CONDUCTED IN 2019. THE INVENTORY WILL BE UPDATED FOLLOWING AN OWNERSHIP AND DATA VALIDATION ANALYSIS IN 2020.